

Stamp Size

a Creative Design Agency

hello@stampsize.in | +91 99169 42543



Index

1. About US	-01
2. Why Us	-02
3. Brands	-03
4. Our Services	-04
5. Projects	-05
6. Team	-25

WHO ARE WE?

For 5 years, StampSize has been striving to make a difference in the world of marketing. Our team of extremely talented and experienced creators, have been noted for their excellent efforts towards branding, creative design, presentation and publication.

Every brand that we launch has been remembered and recognized for its uniqueness. Our grip over understanding marketing collaterals have brought laurels to our name. We don't stop until your brands have made dents in the market.

Our team of publishers deal with data that demands numerical accuracy and our clients come back to us because we've got the best set of creators. Our publications have made a great impact on the viewers. Keeping in mind the company's mandate policies, we also find ways to structure the content in ways that can sell.

We've navigated the market enough to locate the right target audience, for any kind of company. Our previous projects have emerged victorious because we don't do plain, old marketing and we go out of our way to deliver the best!

WHY US?

- Our work starts with plenty of research and understanding of the market and target audience. We don't just start branding without any prior knowledge of contemporaries and other marketing collaterals.
- We'll go out of our way to deliver with precision and creativity. Our designs stand out because we're one of a kind!
- We're multi-medium prone. We don't restrict ourselves to one kind of media and find ways to sell differently. This way, we ensure that your brands and designs reach your audience and create a good impact.
- Experience comprehensive and explicit content, as we craft with extra care and mastery.
- Your content needs are fulfilled with us. We work towards delivering smarter, better-structured and radical material.
- We abide by compliances while also being creative to make things interesting.
- Our experienced team of designers and writers have also got variable perspectives. We think from the points of view of both corporates and customers.
- We understand the market like a conventional businessman.



Companies.... *trusting us!*



Our best friends need us as much as we need them!

OUR SERVICES

Strategy and Planning - Research and planning, Campaign creation, Brand strategy & Brand insight

Communication Design - Presentation publication, Animation & VFX, Branding and Creative Design & Ui/UX

Explainer Videos - Idea-driven videos, idea promotion videos, screencast explainer videos, live action animation videos and app promotion and instruction videos.

Production House - Audio/Video Production, Line Production, Location Scouting, Artist Management

Online Marketing - Digital Marketing & Social Media marketing

Other Services - Audio & video editing, voice-overs, VFX, animations, 3D videos, video marketing and promotions.

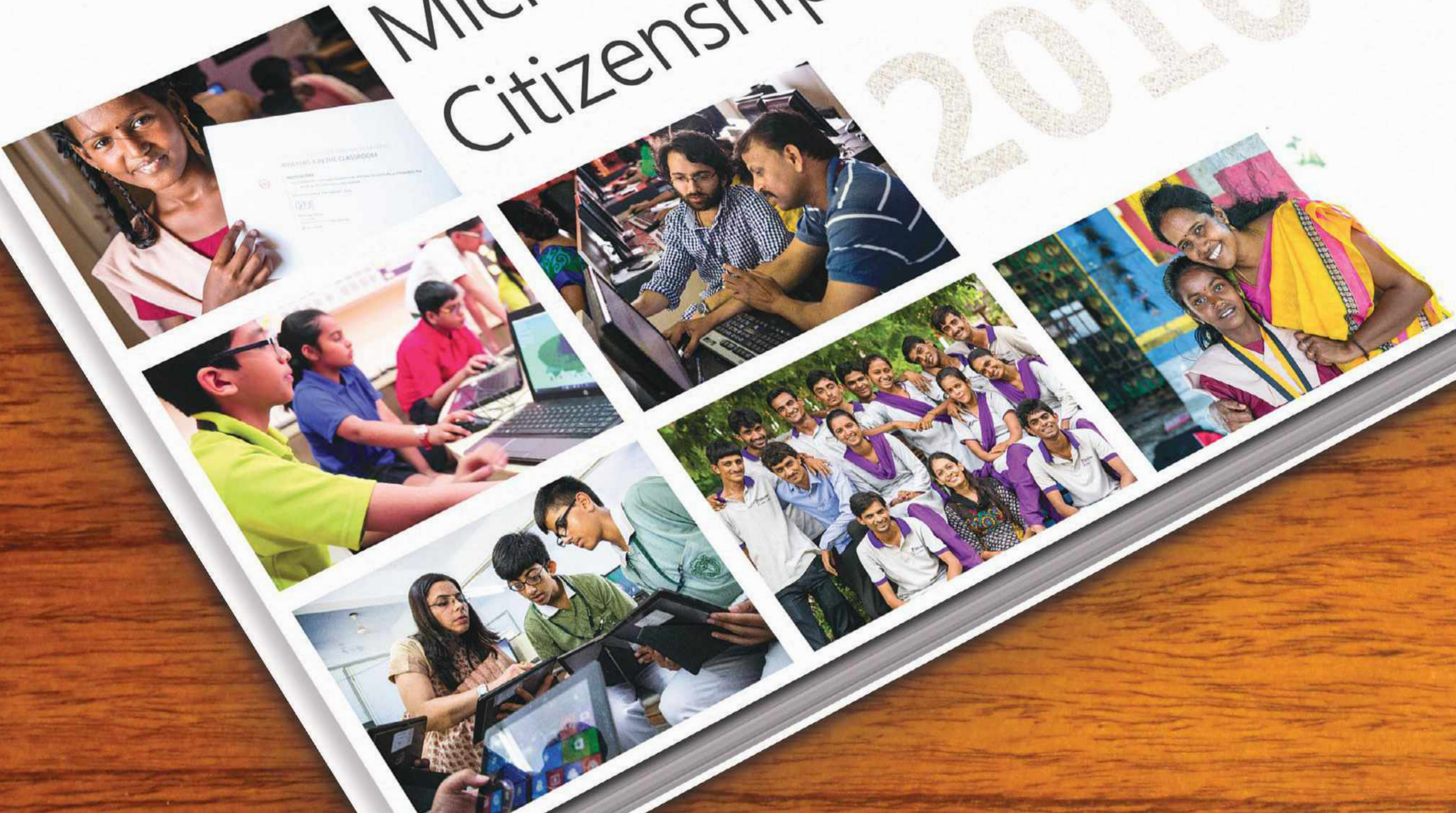
We've got it all covered! Take a look at our campaigns.





Microsoft India Citizenship Report

2016

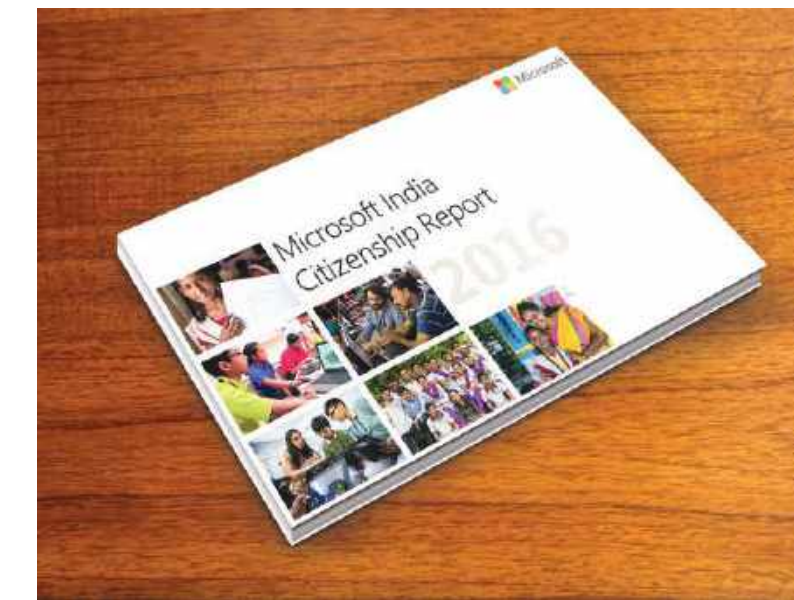



MICROSOFT
CITIZENSHIP REPORT

MICROSOFT CITIZENSHIP REPORT

For the Microsoft Citizenship campaign, our team worked on a large report that demanded utmost accuracy and perfection. With a tight deadline, our team worked tirelessly towards delivering a detailed and intricate model.







Check out our video campaign. [Click here.](#)

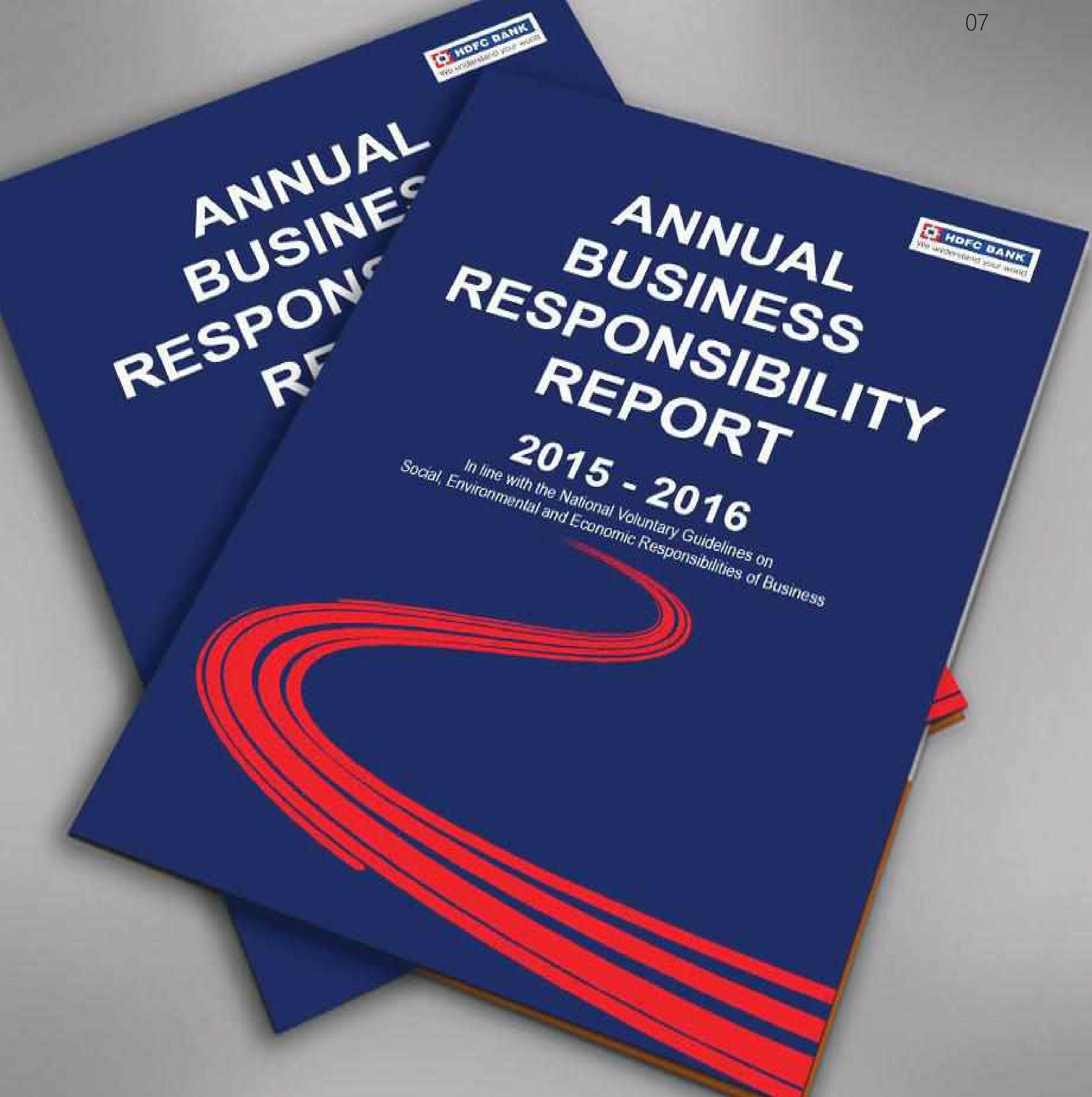




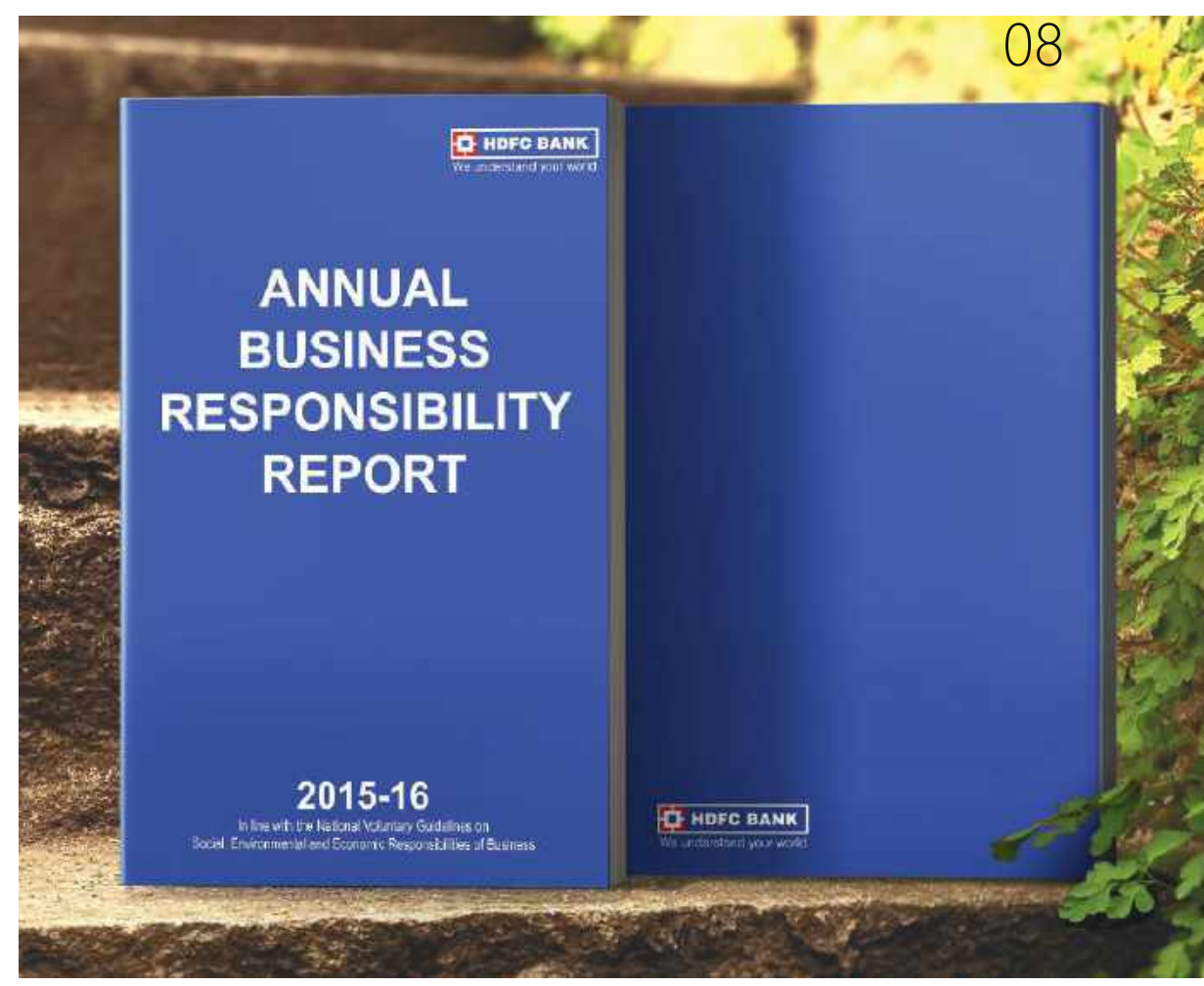
Microsoft India Citizenship Report

2016

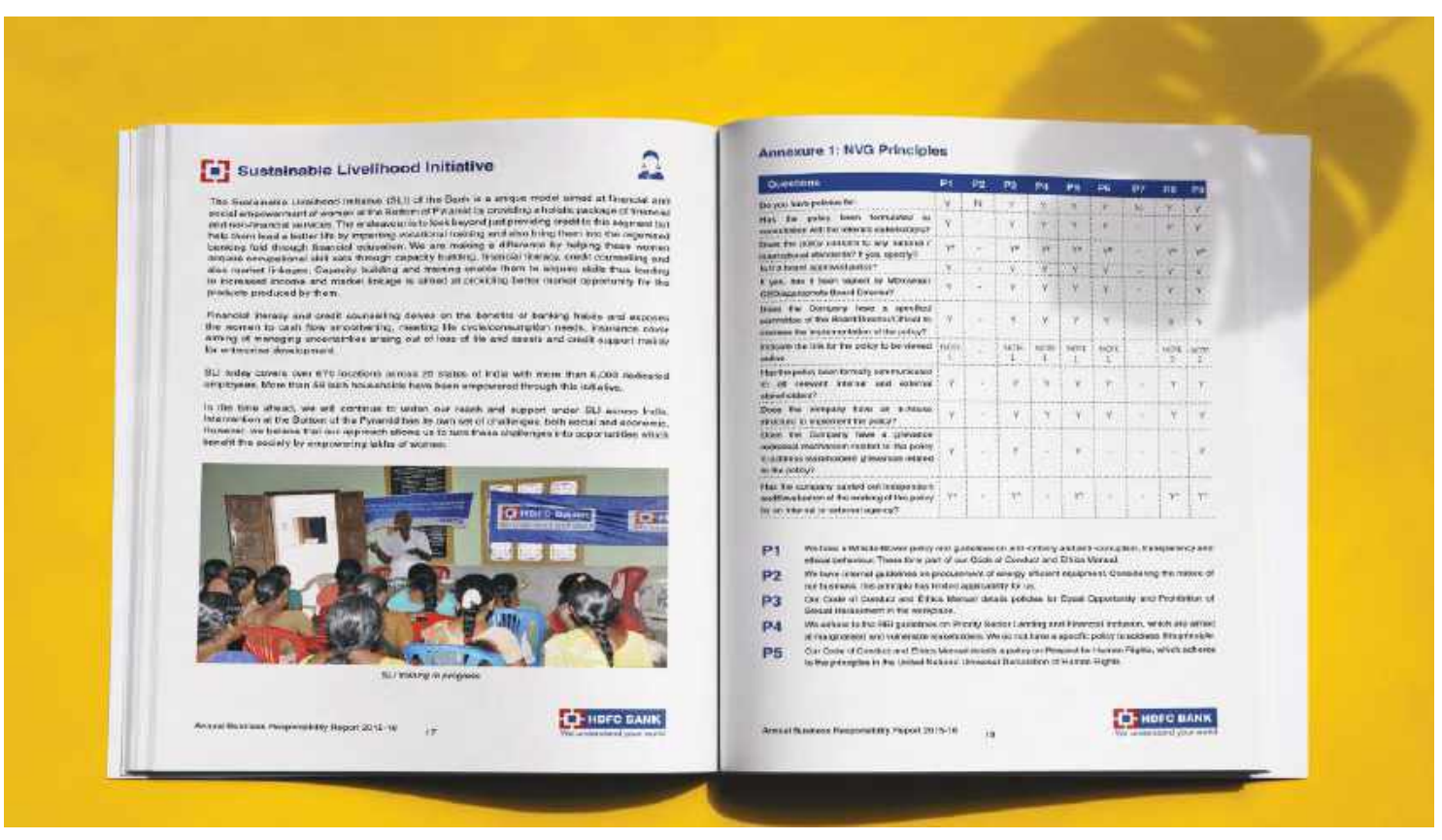


HDFC CORPORATE REPORT



HDfC CORPORATE REPORT

Our team of presentation maestros crafted two reports for HDfC - their Annual business responsibility report and the Sustainability Report. Having worked with HDfC for 2 years, we've been their favourites because we understand the market like none other.





BPCL CORPORATE REPORT

BPCL CORPORATE REPORT

Bharat Petroleum Corporation Ltd. also reached out to us for our assistance in crafting the Sustainability Development Report for the year. We made the report in both Hindi and English with extreme precision.

Check out our video campaign. [Click here.](#)

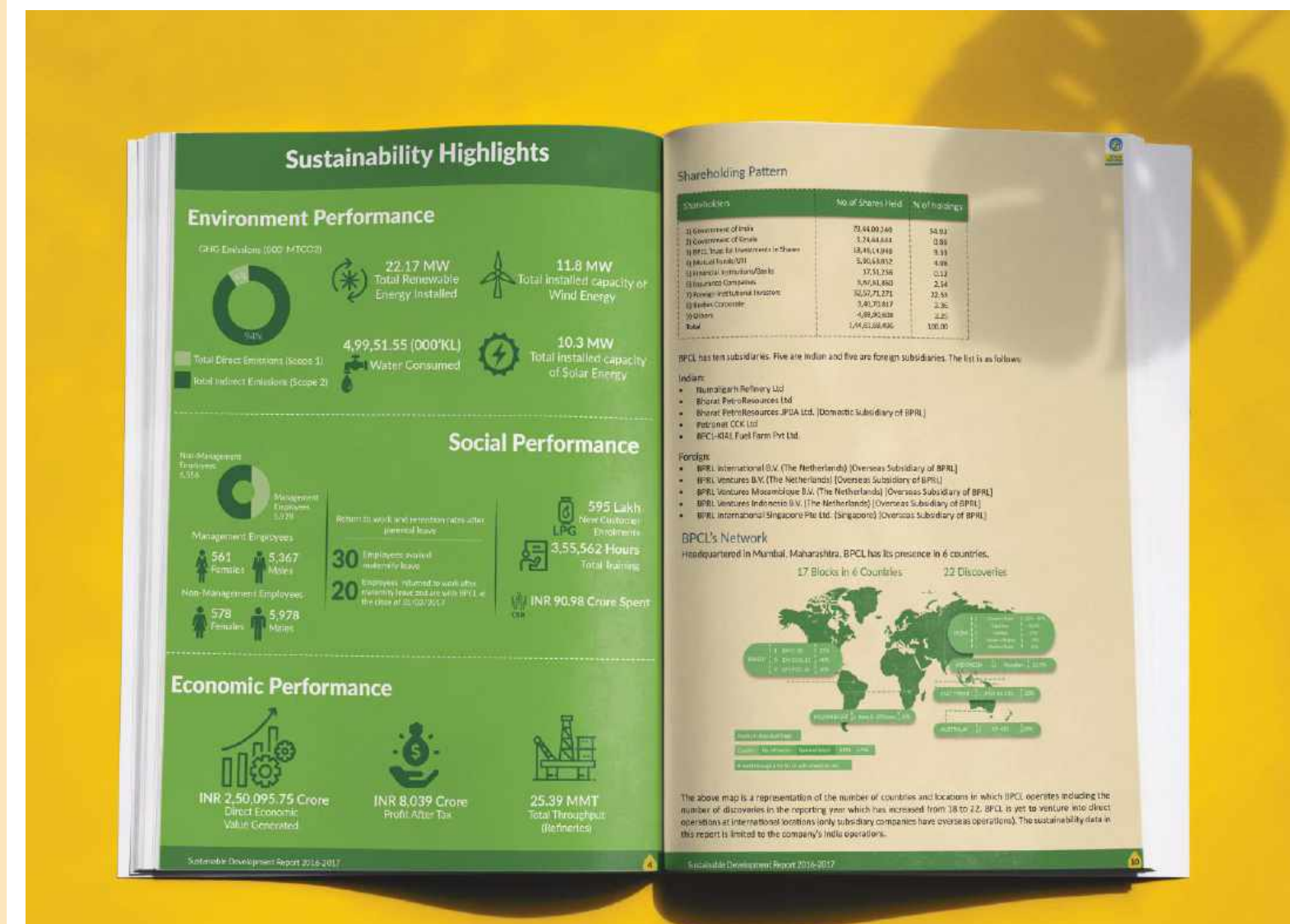


वर्षिय - सूची

01	• परिचय का पृष्ठ	1	02	• अध्यक्षता एवं प्रमुख निदेशक का उद्घरण	2
03	• स्थायित्व का प्रमुख संकेतक	4	04	• प्रोफ़ाइल का परिचय • दृष्टिकोण, मिशन एवं मूल्य • नीतिगत अर्थव्यवस्था एवं उद्घरण नीति	5 5 11
05	• मूल प्रदर्शन, संकेतक एवं अवसर	15	06	• निवेशकों की अंतर्क्रियाएं एवं साक्षरता	17
07	• 2016-17 की उपलब्धियां • 7क. प्रदर्शन एवं संदर्भ • नैतिक-वैश्विक का संकेत • 7क. नैतिक-वैश्विक • नैतिक - वैश्विक का संकेत	25 25 27 28 30	08	• प्रदर्शन प्रबंधन • डी.डी. प्रदर्शन प्रबंधन • 7क. प्रदर्शन एवं संदर्भ • नैतिक-वैश्विक का संकेत • नैतिक-वैश्विक का संकेत • नैतिक-वैश्विक का संकेत • नैतिक-वैश्विक का संकेत	31 31 25 27 31 41 44 45 47 51 51 54
09	• प्रदर्शन प्रबंधन • नैतिक-वैश्विक का संकेत • 9क. प्रदर्शन एवं संदर्भ • 9क. प्रदर्शन एवं संदर्भ • 9क. प्रदर्शन एवं संदर्भ • 9क. प्रदर्शन एवं संदर्भ • 9क. प्रदर्शन एवं संदर्भ	59 59 60 61 67 72 72 76	10	• प्रदर्शन प्रबंधन	77
	• प्रदर्शन प्रबंधन • 1क. प्रदर्शन एवं संदर्भ • 1क. प्रदर्शन एवं संदर्भ • 1क. प्रदर्शन एवं संदर्भ • 1क. प्रदर्शन एवं संदर्भ • 1क. प्रदर्शन एवं संदर्भ	81 84 84 88 90 92 93 96 97			

TABLE OF CONTENT

01	• Scope of the Report	1	02	• C & MD Statement	2
03	• Sustainability Highlights	4	04	• Organisation Profile • Vision, Mission and Values • Corporate Governance and Ethics	5 5 11
05	• Key Impacts, Risks and Opportunities	15	06	• Stakeholder Engagement and Materiality	17
07	• Achievements for 2016-17 • 7k. Awards and Recognitions • Message from the Director - Finance • 7b. Financial Performance • Message from the Director - Refinery	25 25 27 28 30	08	• Performance Management • 8a. Environmental Performance • Energy Management (Renewable and Non-Renewable) • Water • Biodiversity • Emissions Management • Managing Wastes and Effluents • 8b. Social Performance • 8c. Promoting Safety through excellence in operations • 8c. Community Contributions	31 31 31 41 44 45 47 51 51 54
09	• Managing the Supply Chain • Message from the Director • Human Resources • 9a. Investor Interests • 9b. Managing the Talent • 9c. Suppliers • 9d. Dealers and Distributors • 9e. Customers • Message from the Director • Marketing	59 59 59 60 61 67 72 72 76	10	• Product Research and Marketing	77
	• Annexures • Annexure-1 • Annexure-2 • Annexure-3 • Annexure-4 • Annexure-5 • Annexure-6 • Annexure-7 • Annexure-8 • Annexure-9 • Annexure-10 • Annexure-11 • Annexure-12 • Annexure-13 • Annexure-14 • Annexure-15 • Annexure-16 • Annexure-17 • Annexure-18 • Annexure-19 • Annexure-20 • Annexure-21 • Annexure-22 • Annexure-23 • Annexure-24 • Annexure-25 • Annexure-26 • Annexure-27 • Annexure-28 • Annexure-29 • Annexure-30 • Annexure-31 • Annexure-32 • Annexure-33 • Annexure-34 • Annexure-35 • Annexure-36 • Annexure-37 • Annexure-38 • Annexure-39 • Annexure-40 • Annexure-41 • Annexure-42 • Annexure-43 • Annexure-44 • Annexure-45 • Annexure-46 • Annexure-47 • Annexure-48 • Annexure-49 • Annexure-50 • Annexure-51 • Annexure-52 • Annexure-53 • Annexure-54 • Annexure-55 • Annexure-56 • Annexure-57 • Annexure-58 • Annexure-59 • Annexure-60 • Annexure-61 • Annexure-62 • Annexure-63 • Annexure-64 • Annexure-65 • Annexure-66 • Annexure-67 • Annexure-68 • Annexure-69 • Annexure-70 • Annexure-71 • Annexure-72 • Annexure-73 • Annexure-74 • Annexure-75 • Annexure-76 • Annexure-77 • Annexure-78 • Annexure-79 • Annexure-80 • Annexure-81 • Annexure-82 • Annexure-83 • Annexure-84 • Annexure-85 • Annexure-86 • Annexure-87 • Annexure-88 • Annexure-89 • Annexure-90 • Annexure-91 • Annexure-92 • Annexure-93 • Annexure-94 • Annexure-95 • Annexure-96 • Annexure-97 • Annexure-98 • Annexure-99 • Annexure-100	81 84 84 88 90 92 93 96 97			



Sustainability Highlights

Environment Performance

- GHG Emissions (1000 MT CO2e): 54%
- 22.17 MW Total Renewable Energy Installed
- 11.8 MW Total Installed capacity of Wind Energy
- 4,99,51.55 (1000KL) Water Consumed
- 10.3 MW Total Installed capacity of Solar Energy

Social Performance

- 595 Lakh New Customers Enrolled
- 3,55,562 Hours Total Training
- 59% Return to work and retention rate after parental leave
- 30% Employees returned to work after paternity leave within 10% of the leave of 30 days
- 20% Employees returned to work after maternity leave within 10% of the leave of 90 days
- 561 Females / 5,367 Males Management Employees
- 578 Females / 5,978 Males Non-Management Employees
- INR 90.98 Crore Spent on CSR

Economic Performance

- INR 2,50,095.75 Crore Direct Economic Value Generated
- INR 8,039 Crore Profit After Tax
- 25.39 MMT Total Throughput (Refineries)

Shareholding Pattern

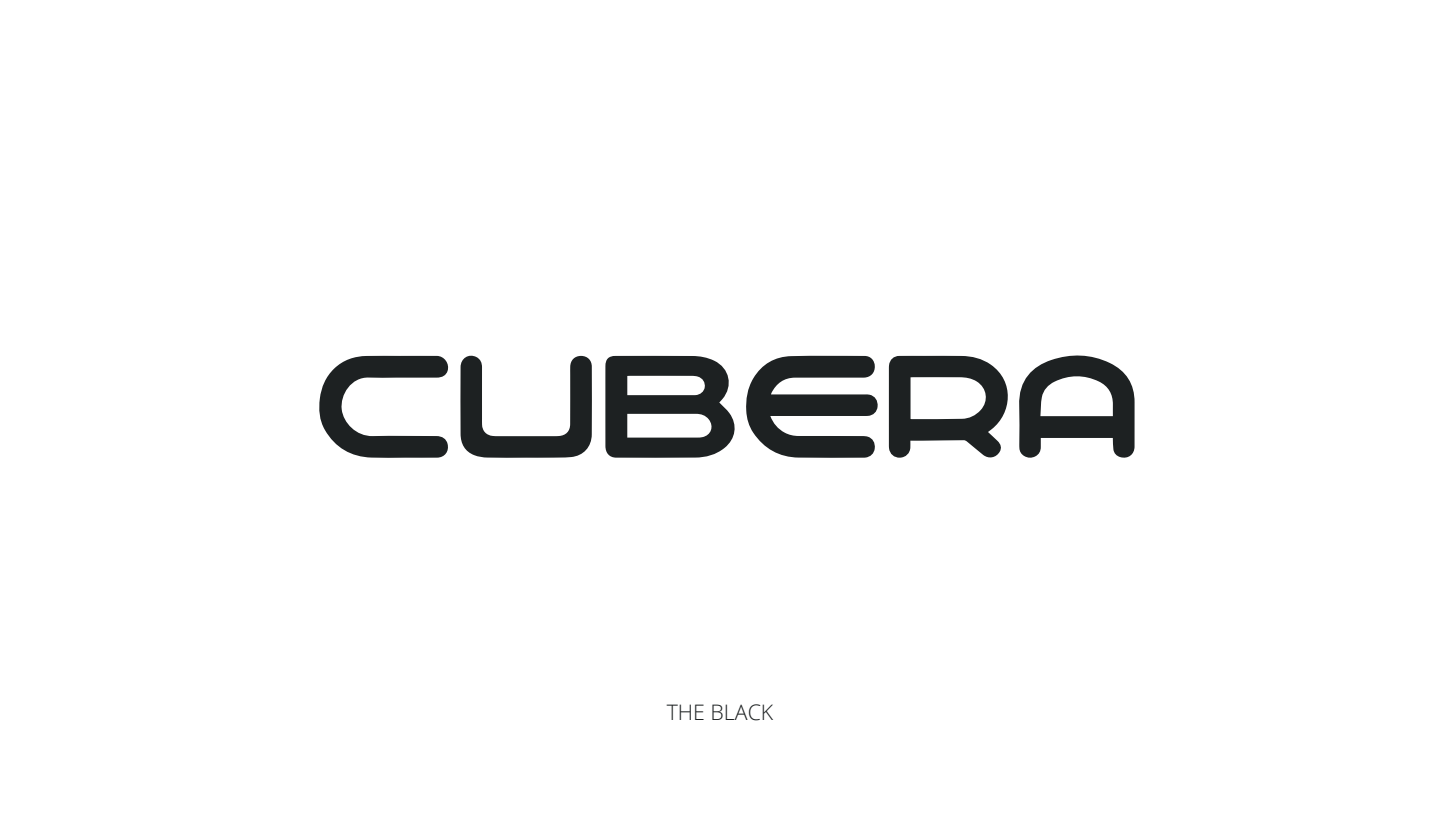
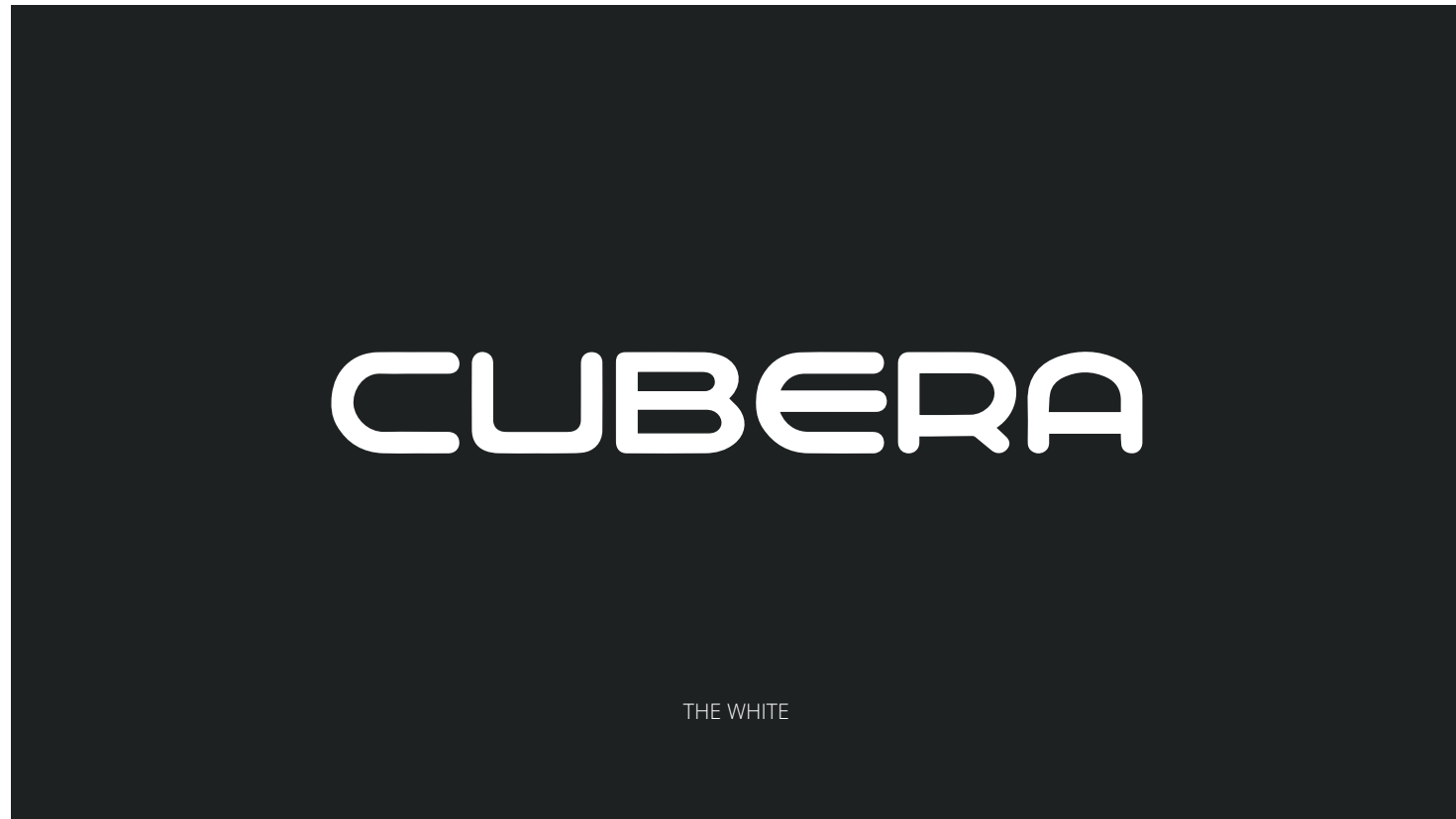
Shareholders	No. of Shares Held	% of Holdings
1) Government of India	71,44,00,000	84.91
2) Government of Orissa	1,24,44,000	0.88
3) BPCL Trust for Investment in Shares	18,48,49,000	9.11
4) BPCL Employees' Share	5,26,58,000	3.12
5) BPCL Employees' Share	17,51,750	0.09
6) BPCL Employees' Share	9,70,000	0.04
7) BPCL Employees' Share	10,50,72,000	21.44
8) BPCL Employees' Share	3,40,70,000	2.35
9) BPCL Employees' Share	4,80,000	0.02
10) BPCL Employees' Share	1,40,000,000	100.00

BPCL's Network

Headquartered in Mumbai, Maharashtra, BPCL has its presence in 6 countries, 17 Bunkers in 6 Countries, 22 Discoveries

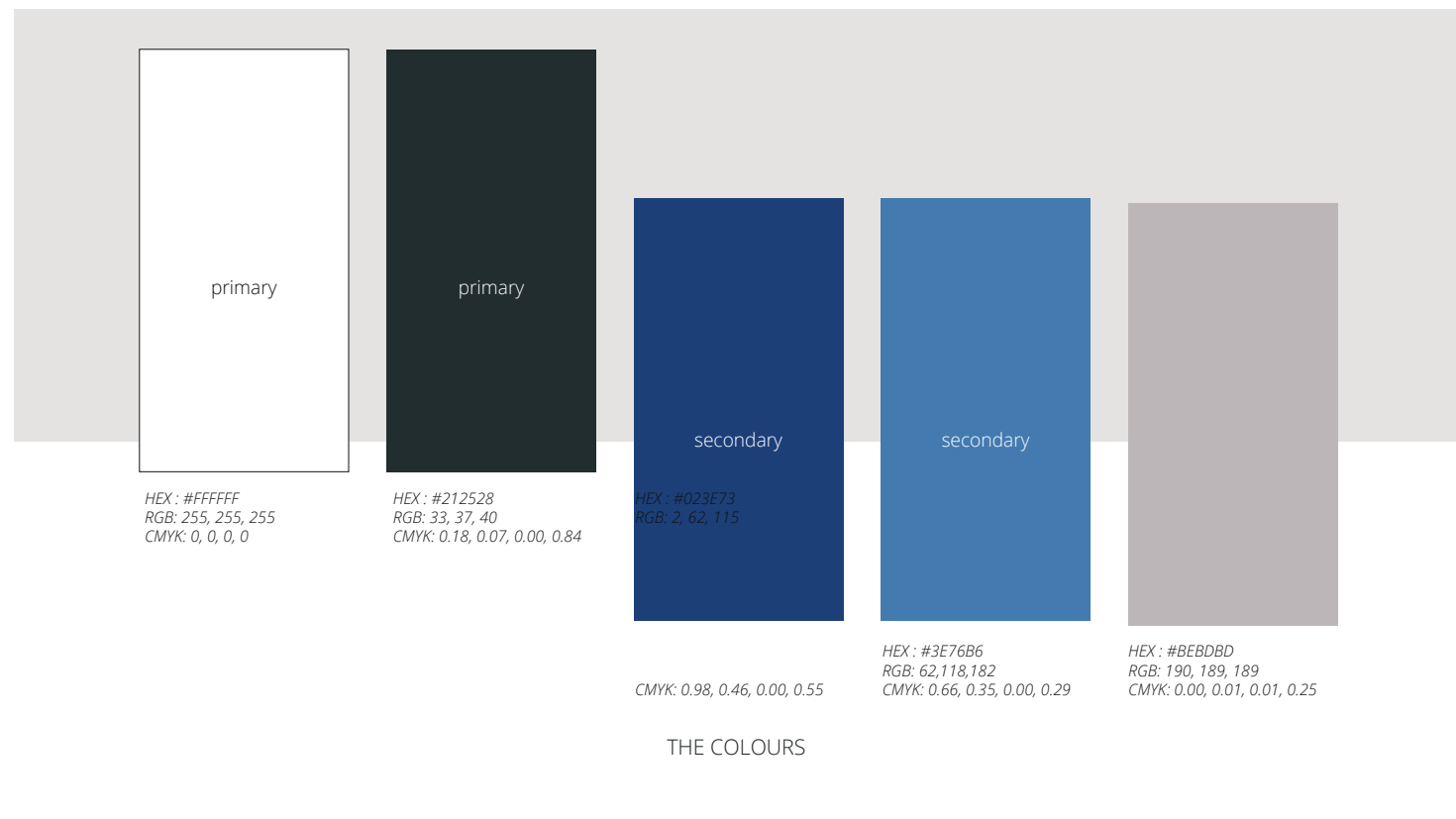
CUBERA
BRANDING





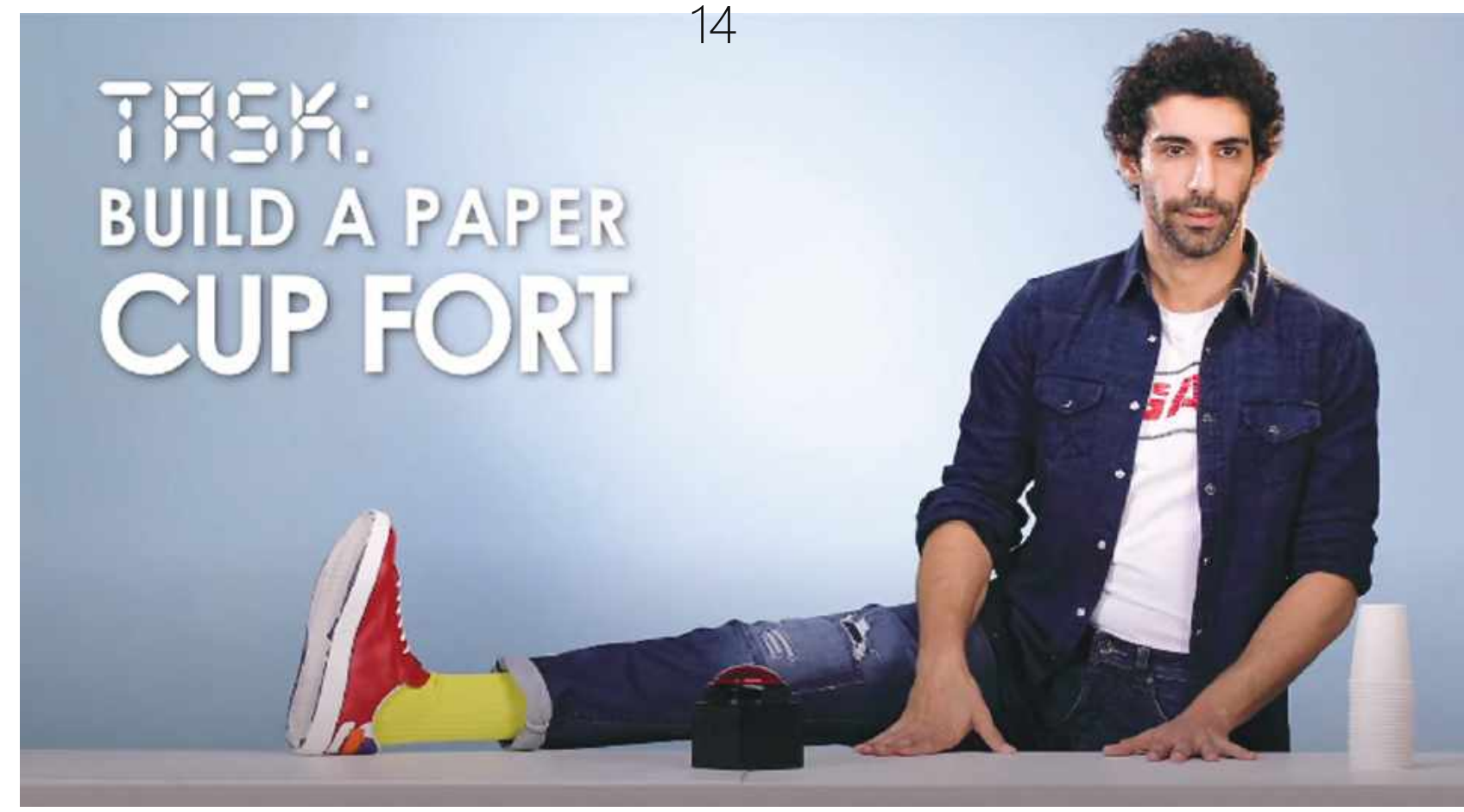
CUBERA BRANDING

Our team of branding experts redesigned the branding of Cubera which is a company based in Bengaluru. Our team worked tirelessly towards delivering a detailed and intricate design.





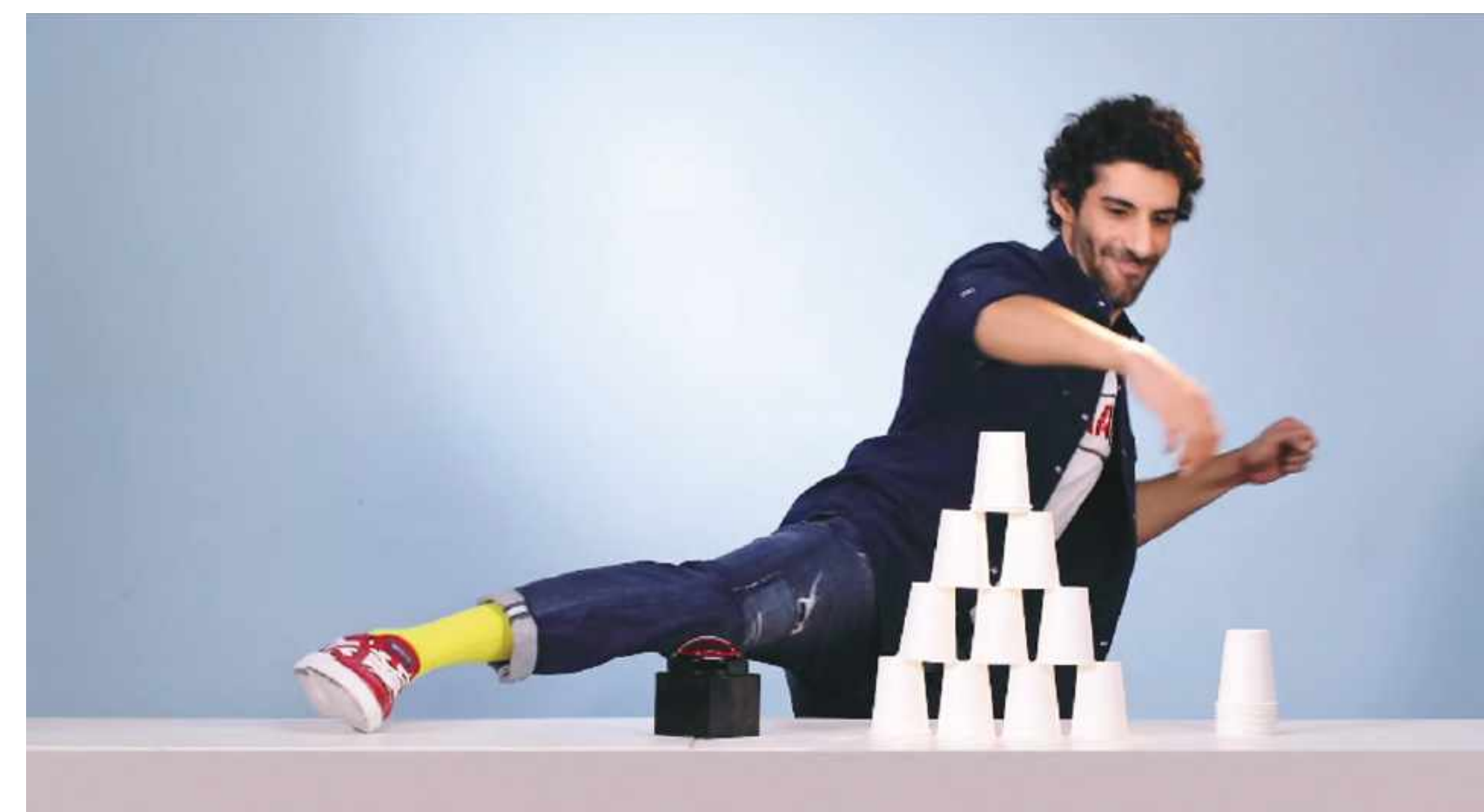
AJIO GAS VIDEO CAMPAIGN



Ajio GAS Video CAMPAIGN

We were the video creators for yet another Ajio Campaign, collaborating with GAS. We consider this as our best work yet because we had Mr.Jim Sarbh take our 30 second challenge and uplift all our spirits.

Check out our video campaign. [Click here.](#)





INSIDER
experiences

MARVEL-MYNTRA
CAMPAIGN



Marvel-Myntra CAMPAIGN

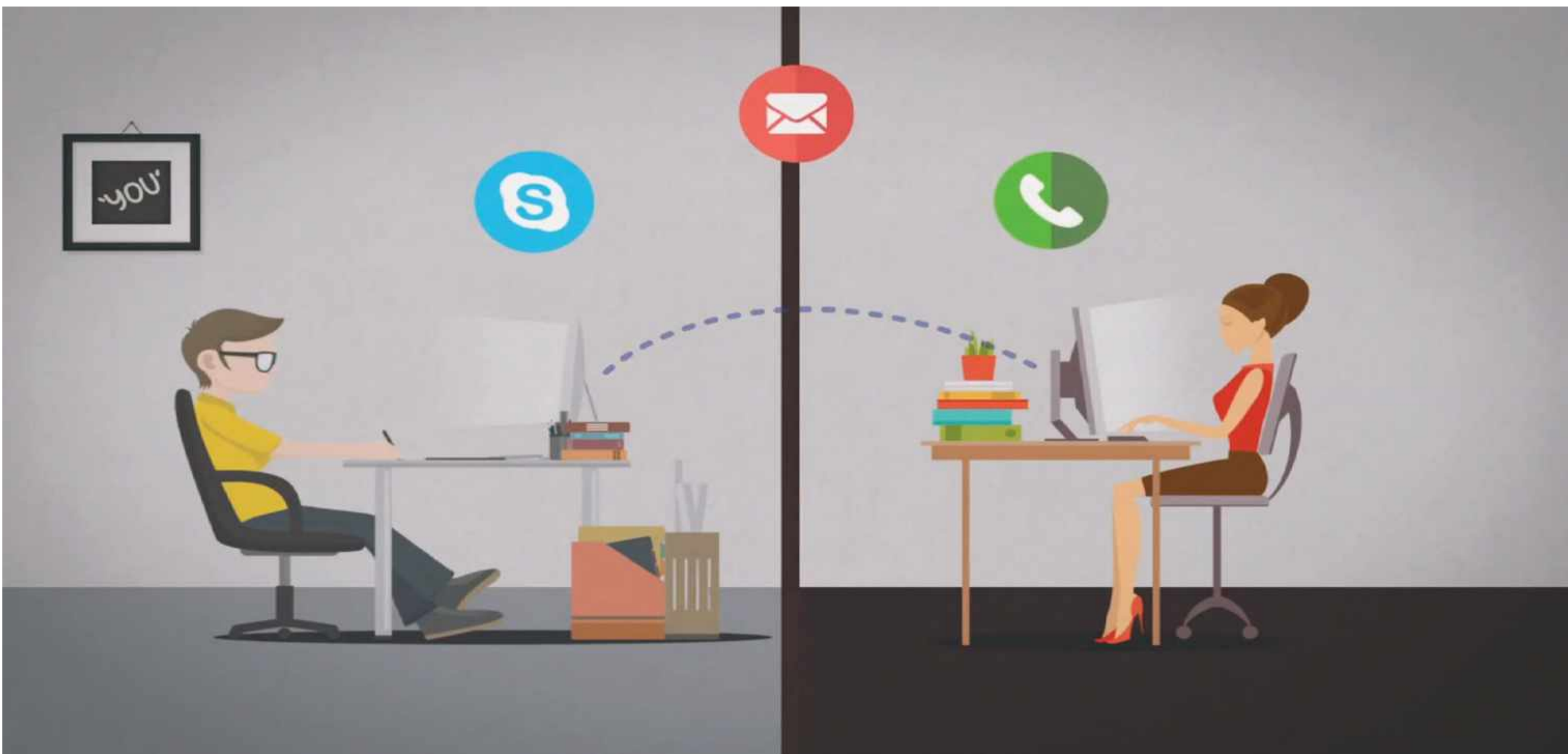
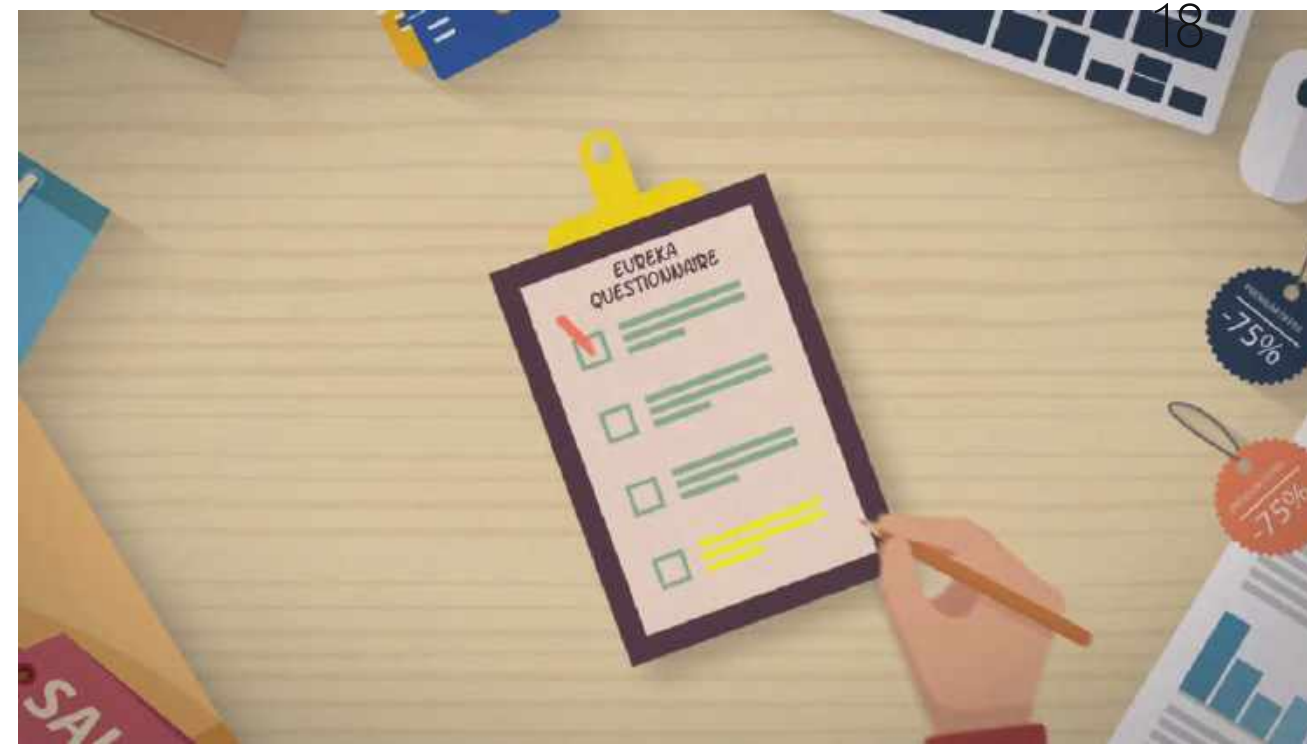
Marvel collabed with Myntra to celebrate their 80-year anniversary since their inception and we are beyond glad that we got to manage their entire event. The video we created captured their entire event that was full of life and we got sneak peeks of lot of unseen marvel footage!

Check out our video campaign. [Click here.](#)





IIT BOMBAY
EXPLAINER VIDEO



IIT BOMBAY EXPLAINER VIDEO

We created an Explainer video on sales and marketing for the exclusive event in IIT Bombay.

Video featured pitch, sales and lead generation which were the key topics. Our Team Worked on the explainer content video for the event which was the main highlight of the event.



TRENDS TROPICAL JUNGLE CAMPAIGN

TRENDS - TROPICAL JUNGLE CAMPAIGN

Our team worked with Reliance Trends for their limited-edition Tropical Jungle collection and provided them with a customised, high-quality floral cloth background to add an aesthetic touch to the theme and get every detail captured.

Wanting to cater to quality, StampSize went through various vendors to get a high-grade printing on the fabric.



AJIO BANNER CAMPAIGN





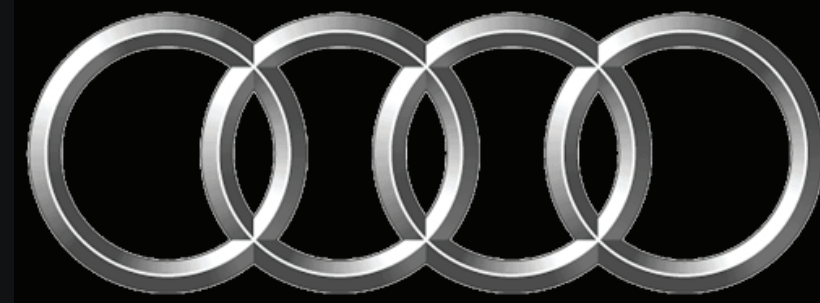
AJIO - BANNER CAMPAIGN

A 12-hour shoot at Sarjapur Socials with our models flaunting exclusive and edgy garments as they flirted with a high-quality lens, was one of our coolest works!

After consuming huge mugs of coffee and a hot breakfast, our models wiped out the grumpiness on their early morning faces. Despite the rules and compliances of the pub, we found ways to let them have fun on the sets.



nunam



Audi Environmental Foundation

The way we started is that we spent quite some time in rural areas,

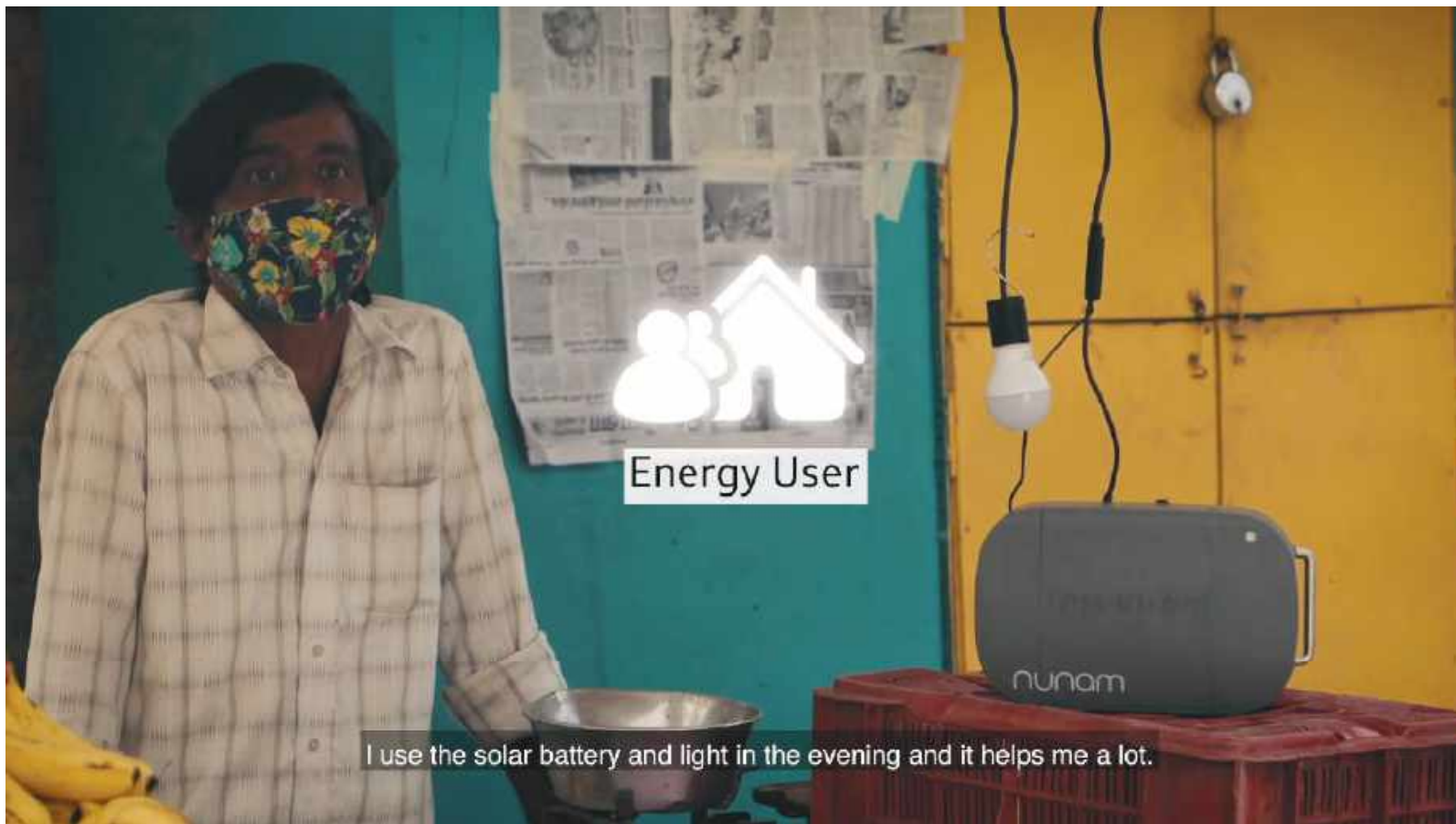


NUNAM CAMPAIGN

At Nunam they are fighting against climate change by reducing the carbon emissions in the atmosphere and improving energy access.

The campaign was about the next generation energy storage technology using second life lithium batteries.

Check out our video campaign. [Click here.](#)



TEAM



Pranava Sundar
CEO



Nayana Chavan
COO



Pricilla Dillan
Lead Designer



Prasanna B
Project Co-ordinator



Mrudula
Content Writer



Ankit Negi
Research Expert



Mahua Mandal
Instructional Designer

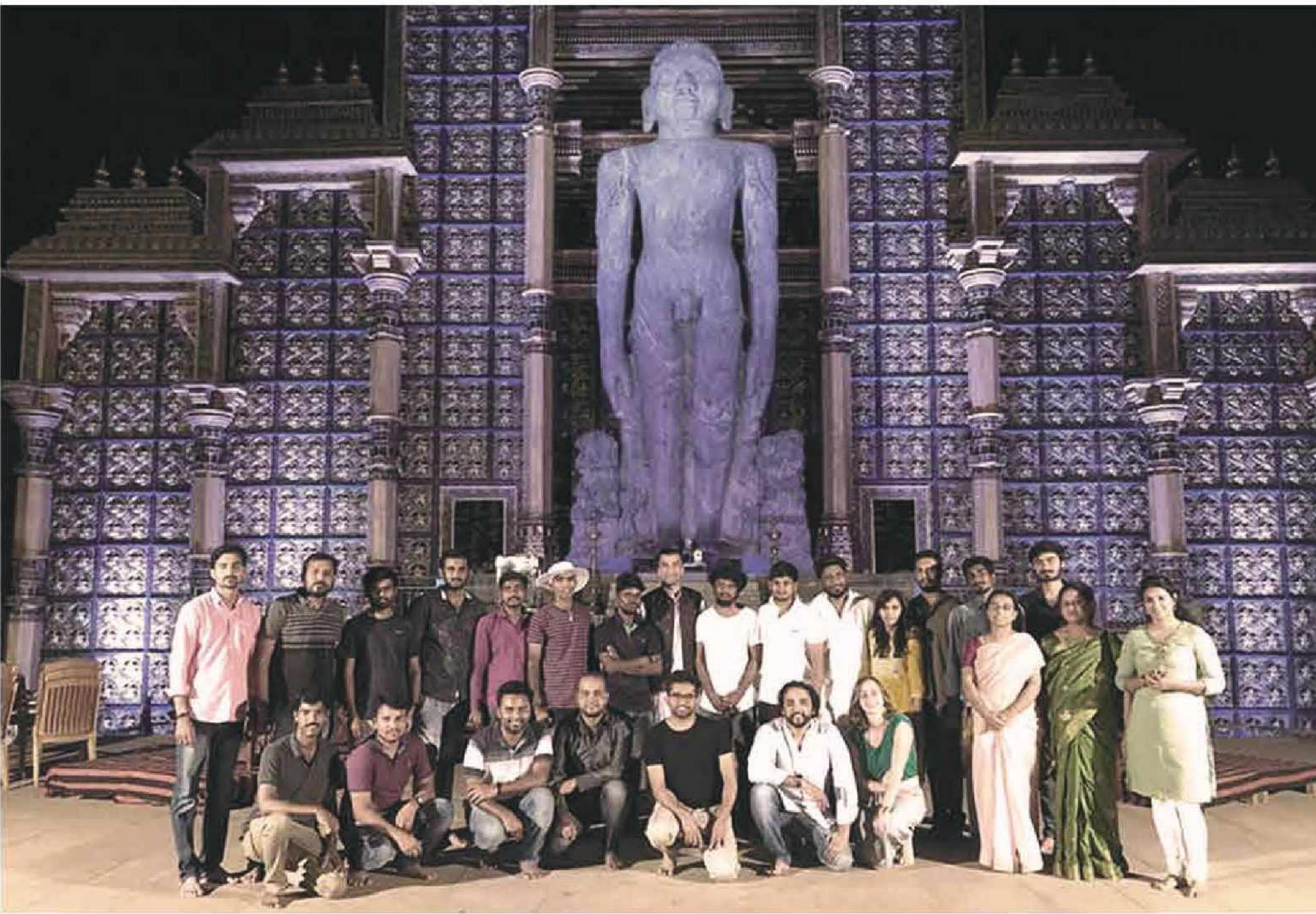


Meera Venkatesan
Instructional Designer Specialist



Gautham Prithvirajan
Lead Animation & VFX

Bringing **SMILES**





StampSize

TALK TO US!

Save a ton of money, time & effort.

+91 99169 42543 | +91 96864 76772

hello@stampsize.in | www.stampsize.in

StampSize Production

#196 5th Floor "Abhaya Heights" 3rd Cross, Sarakki Industrial Area,
J.P Nagar 3rd Phase, Bangalore 560078